

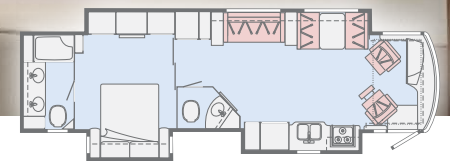


**FORZA**

**WINNEBAGO**



On the Cover: 38W Sandstone Full-Body Paint  
Interior: 38F Nantucket with Coffee-Glazed Honey Cherry Cabinetry



This brochure features the Forza 38F Floorplan

Stepping up to diesel luxury and performance has never been easier

Accessibly priced and loaded with features, the Winnebago Forza® is ideal for couples or families looking to step up to the diesel pusher lifestyle. Each of the four expansive floorplans comes with elegant touches like a residential refrigerator, Corian® galley countertops, walkaround queen bed, Primera® upholstered Versa swivel cab seats, and an available StudioLoft™ bed for added sleeping flexibility. Designed to take full advantage of Freightliner's 340-hp

XCS chassis, the Forza delivers a smooth and well-mannered ride while providing up to 228 cubic feet of exterior storage, so you've got plenty of room for all the toys. If you're looking for diesel performance, space, and refinement while keeping a close eye on the bottom line, take a closer look at the Winnebago Forza.

# Forza | Lounge

You'll start to relax the moment you step into the Forza. The comfortable Primera-covered sofa beckons – a TrueComfort+ Sofa in the 36G, 38F and 38W, and a RestEasy® loveseat in the 34T. Every floorplan features swivel cab seats as well as a versatile BenchMark® dinette for additional seating options. When movie night comes around, the massive HDTV brings the action to life, aided by the home theater sound bar system. An available fireplace (standard on the 38W) adds to the ambiance, and takes the chill off a cool night's air. Tinted dual-glazed windows (dual-pane frameless windows on the 38F) with MCD or optional solar/blackout roller shades provide extra insulation for added comfort.





BenchMark Dinette



OnePlace System Center



TrueComfort+ Sofa



TrueComfort+ Sofa Bed



BenchMark Dinette as Bed



BenchMark Dinette Storage

# Forza | Galley

A well-equipped kitchen is one key to a great trip, and the Forza's galley delivers. Here you'll find everything you need right at hand, whether you're feeding a hungry family or simply serving up appetizers for friends. The two-door residential refrigerator/freezer with an icemaker keeps things cool while cooking duties are handled by the three-burner range top and the microwave/convection oven. Dual sinks make cleanup easy and the Corian countertops, decorative backsplash, and Corian sink covers are both functional and beautiful.



The master bedroom features a comfortable walkaround queen bed with a true innerspring mattress and storage below. An available queen or king (36G, 38F) InnoMax® Nouveau™ Freedom air mattress takes sleeping comfort to the next level. Dual nightstands and large wardrobes mean plenty of storage for clothing and personal items and the HDTV is the perfect venue for a late-night movie. An available powered StudioLoft bed over the cab area provides additional sleeping capacity, and the bunk beds in the 38W let you sleep as many as nine. The Forza's spacious bathrooms feature residential-style porcelain toilets and textured glass shower doors. The 38W features a guest bath with shower, as well as a private master bath.





The Forza cab is designed to put you in command. The OptiView™ dash enhances the RV experience with the industry's first fully integrated all-digital LCD instrument cluster. With powered Versa seats, adjustable armrests, fixed lumbar support, multi-adjustable recline functions and swivel, plus the six-way power assist seat pedestals provide support, comfort, and adjustability you'll appreciate over the long haul. The radio/rearview monitor system includes a 10.1" LCD color touch screen, handheld remote, rear/side cameras, and superb connectivity with other devices. A powered MCD blackout roller visor/shade (front windshield) and MCD blackout roller shade (driver and passenger windows) enhance privacy in camp. Power mirrors with defrost and a sideview camera are standard, while available upgrades like the +Lounge passenger cab seat with footrest and flip-up workstation, SiriusXM® (includes 90-day trial subscription), and JBL premium sound system let you further tailor your Forza to your personal preferences.



Optional +Lounge Passenger Seat



Stepwell Cover

The Forza's attractive exterior lines and premium high-gloss sidewall skin are accentuated by Sikkens lustrous, full-body paint. Once in camp, deploy the powered patio awning with LED lighting, add lawn chairs, and kick back. The 34T features a second powered patio awning, while other floorplans include a powered entrance awning to help keep things dry if the weather turns. And for those times you want to take it outside, every Forza features an exterior compartment that's pre-wired with 110-volt power, a TV antenna, and 3-way A/V receptacles; you can also opt for the available exterior entertainment center with an HDTV.





# Forza | Paint

Choose from four full-body paint exterior options.



**Autumn Gold**  
FULL-BODY PAINT



**Sandstone**  
FULL-BODY PAINT



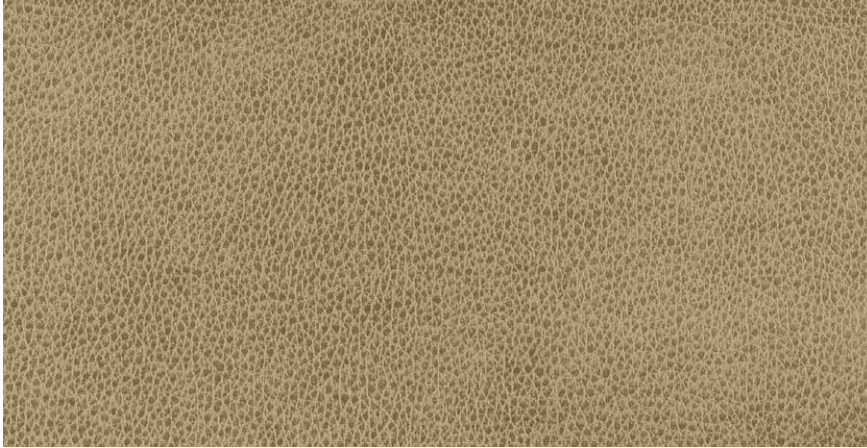
**Shiraz**  
FULL-BODY PAINT



**Tartan**  
FULL-BODY PAINT

Choose from four collections and three wood finishes.

## Autumn Ridge



Primera by Ultrafabrics



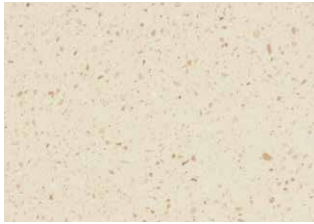
Feature Fabric



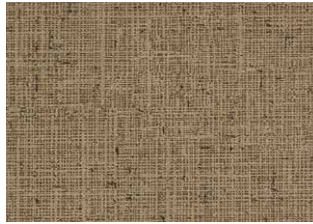
Vinyl Flooring



Bedspread



Corian Countertop  
(Galley)



Wall Board



Coffee-Glazed Honey Cherry



Coffee-Glazed Vienna Maple

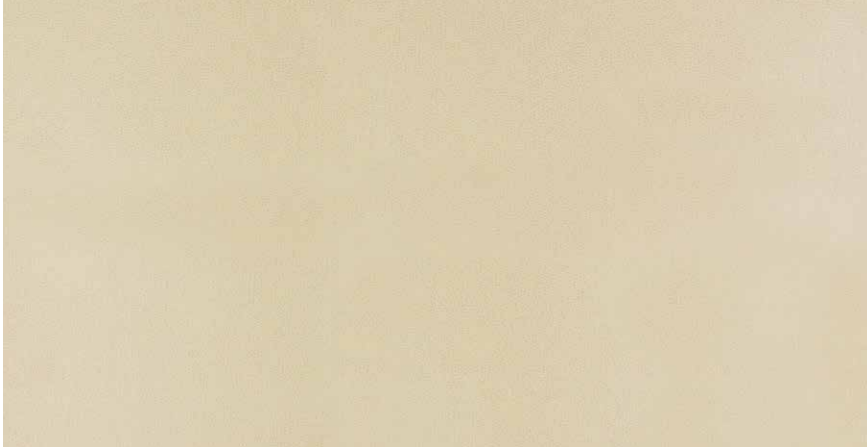


Glazed Driftwood

Winnebago® reserves the right to change décor materials and specifications without notice or obligation.

Choose from four collections and three wood finishes.

## Nantucket



Primera by Ultrafabrics



Feature Fabric



Vinyl Flooring



Bedsread



Corian Countertop  
(Galley)



Wall Board



Coffee-Glazed Honey Cherry



Coffee-Glazed Vienna Maple



Glazed Driftwood

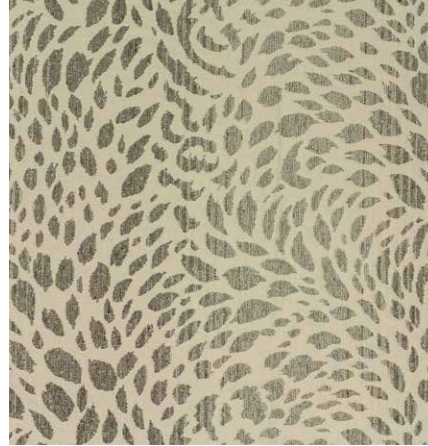
Winnebago® reserves the right to change décor materials and specifications without notice or obligation.

Choose from four collections and three wood finishes.

# Serene



Primera by Ultrafabrics



Feature Fabric



Vinyl Flooring



Bedsread



Corian Countertop  
(Galley)



Wall Board



Coffee-Glazed Honey Cherry



Coffee-Glazed Vienna Maple



Glazed Driftwood

Winnebago® reserves the right to change décor materials and specifications without notice or obligation.

Choose from four collections and three wood finishes.

# Tranquil



Primera by Ultrafabrics



Feature Fabric



Vinyl Flooring



Bedsread



Corian Countertop  
(Galley)



Wall Board



Coffee-Glazed Honey Cherry

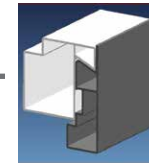
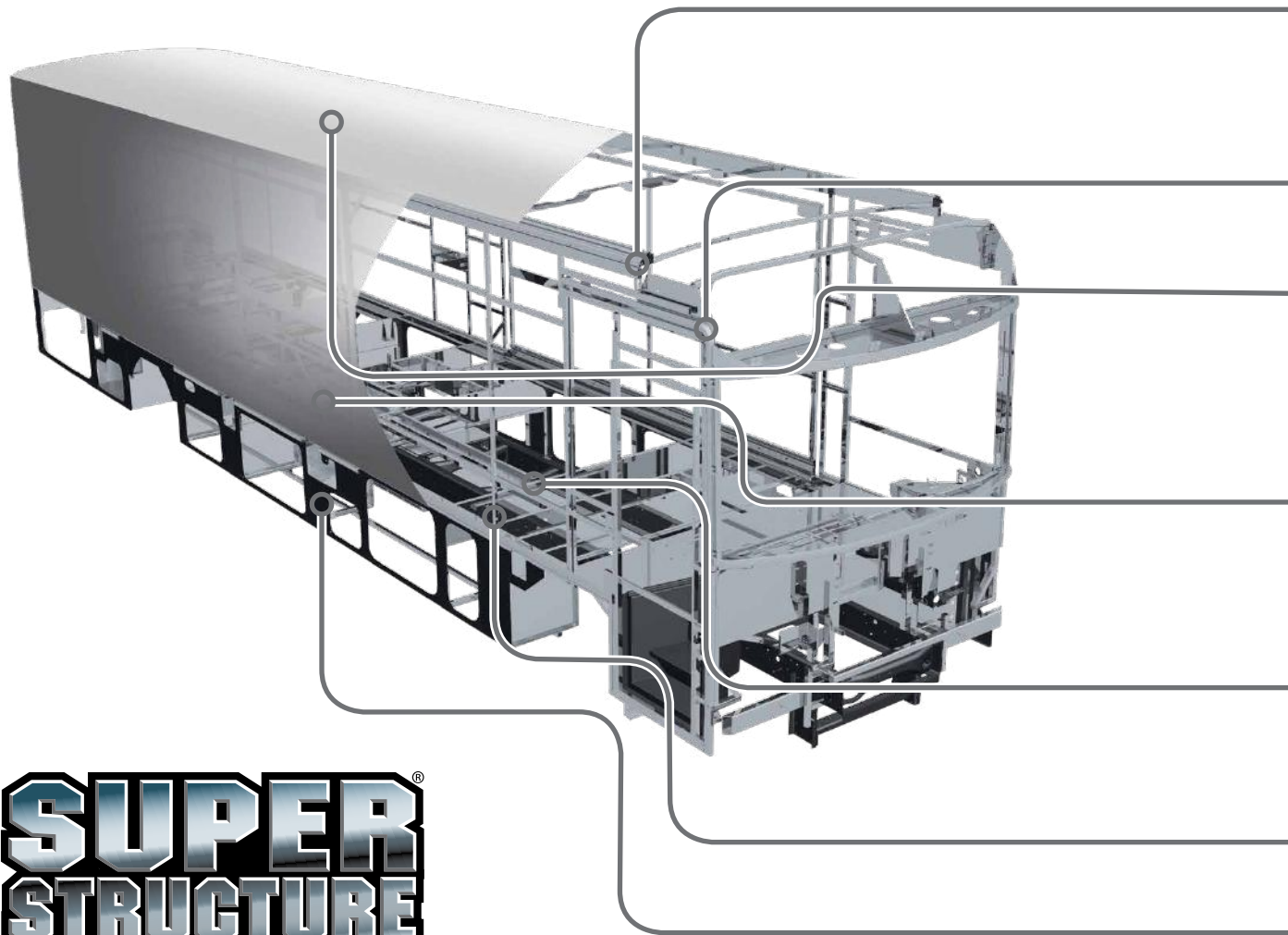


Coffee-Glazed Vienna Maple



Glazed Driftwood

Winnebago® reserves the right to change décor materials and specifications without notice or obligation.



**Interlocking Joints** Specially engineered interlocking joints connect the floor, sidewalls, and roof where competitors often rely on simple screws to bear the weight.



**Laser-Cut Tubing** Precision laser cutters create precise joints in structural steel that are stronger and require less welding.

**Fiberglass Roof** The one-piece fiberglass roof is backed by a 10-year limited parts-and-labor roof skin warranty

**Thermo-Panel® Sidewalls** By layering fiberglass and high-density block foam insulation with welded aluminum support structures, we create some of the industry's strongest, most durable, and lightweight sidewalls.

**Embedded Steel** Metal substructures embedded into the sidewall provide solid attachment points to keep cabinets and appliances mounted securely in place.

**Solid Framework** Structural extruded aluminum creates an extremely strong and solid frame.

**E-coating** An electrodeposition coating helps protect critical steel components.

**SUPER  
STRUCTURE**

BUILT TO LAST

From our smallest Class C coach to our largest diesel-pusher, coaches are built to Winnebago's legendary SuperStructure® construction design. It's a process developed and refined over more than 60 years of building some of the strongest, most durable coaches in the industry.

**TESTING** Before rolling out of our factories, every coach undergoes an extensive 113-point inspection. Each coach also passes a high-pressure water test that simulates rain at a rate of 50-inches per hour to check for leaks. During the design process, our computer simulations, physical testing center, and rigorous test track ensure each model is built to last.

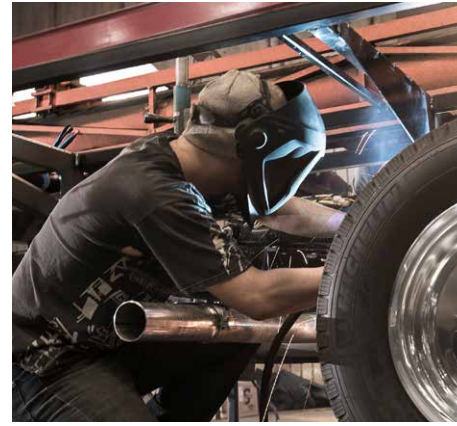


Visit [BetterBuiltRVs.com](http://BetterBuiltRVs.com) to gain real insight into what goes into a Winnebago motorhome.

**DETAILS** At Winnebago, we treat the features you can't see with the same care as the ones you can. Look in the access panels of some of our competitors' coaches and you'll see loose insulation and wires haphazardly strewn about. Winnebago maintains a clean fit and finish throughout so your coach will last for the long haul.



**BUILT IN-HOUSE** We process and finish key aluminum parts. We rotocast our own plastic components. In fact, we manufacture most of our own parts so they are designed to fit the space, rather than fitting the space to an awkward off-the-shelf component size.



**SUPER  
STRUCTURE**  
BUILT TO LAST

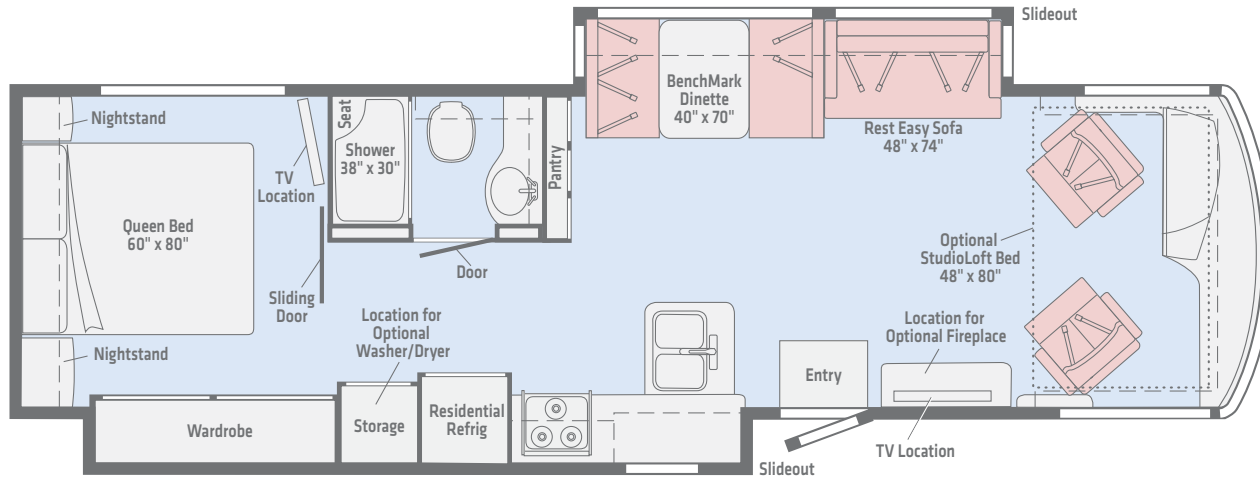
**TAKE A TOUR** We're proud of our processes, state-of-the-art facilities, and the people who make Winnebago number one. We invite you to visit our complex in Forest City, Iowa, for a firsthand look at the dedication and technology behind every motorhome we build.



Call (641) 585-6936 or (800) 643-4892 or visit us online at [WinnebagoInd.com/company/visit](http://WinnebagoInd.com/company/visit) for more information.

# 34T

Dual slideouts, a mid-coach bath, RestEasy Loveseat and BenchMark Dinette make the 34T perfect for couples or small families.



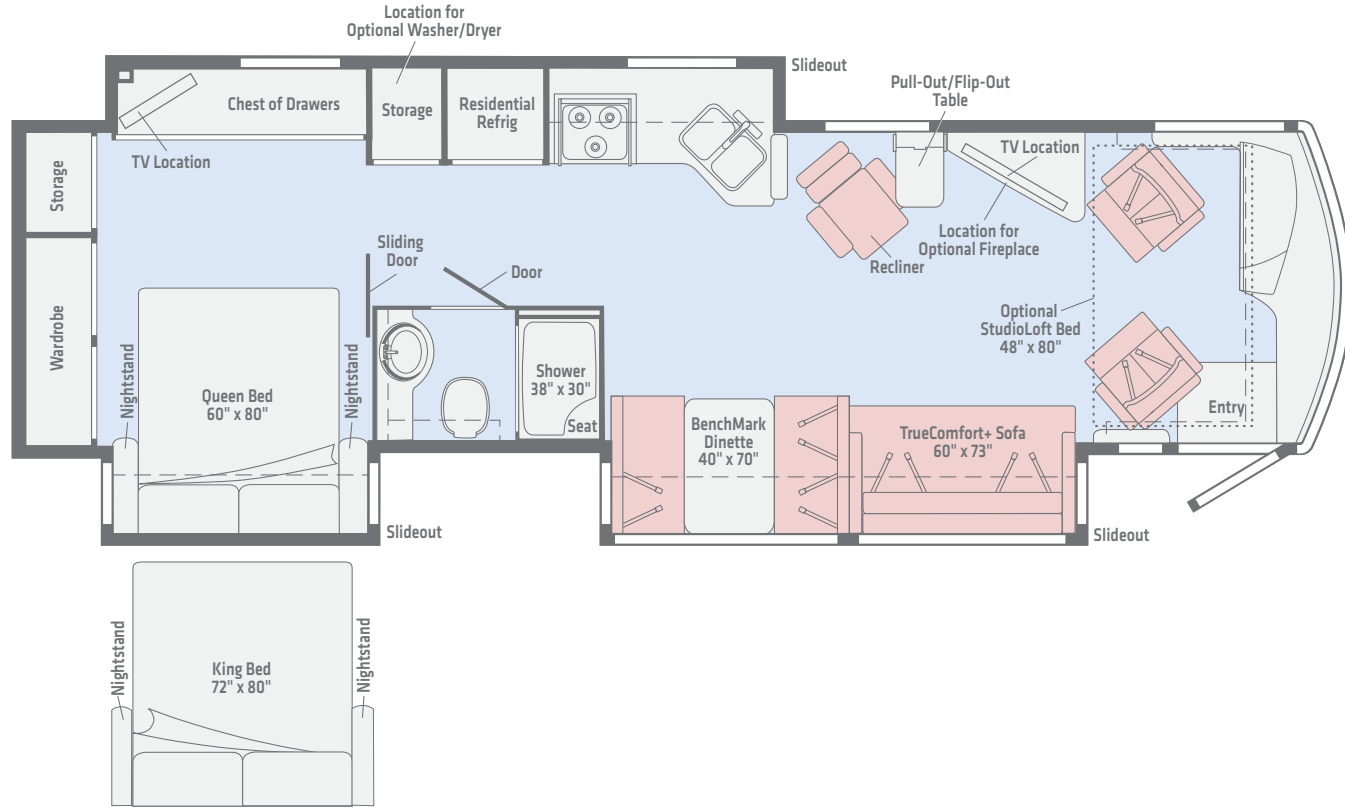
**Length** 35'9"  
**Ext. Storage** (cu. ft.) 153  
**Seating** 7

*Dimensions shown are for sleeping and shower space only and may vary due to styling differences. Dashed lines denote overhead storage areas. Floorplans and specifications are also available online at [WinnebagoInd.com](http://WinnebagoInd.com).*

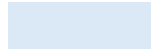


# 36G

Triple slideouts, lots of interior storage, elegant and spacious living areas highlight the versatile 36G floorplan.



Primera



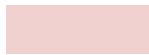
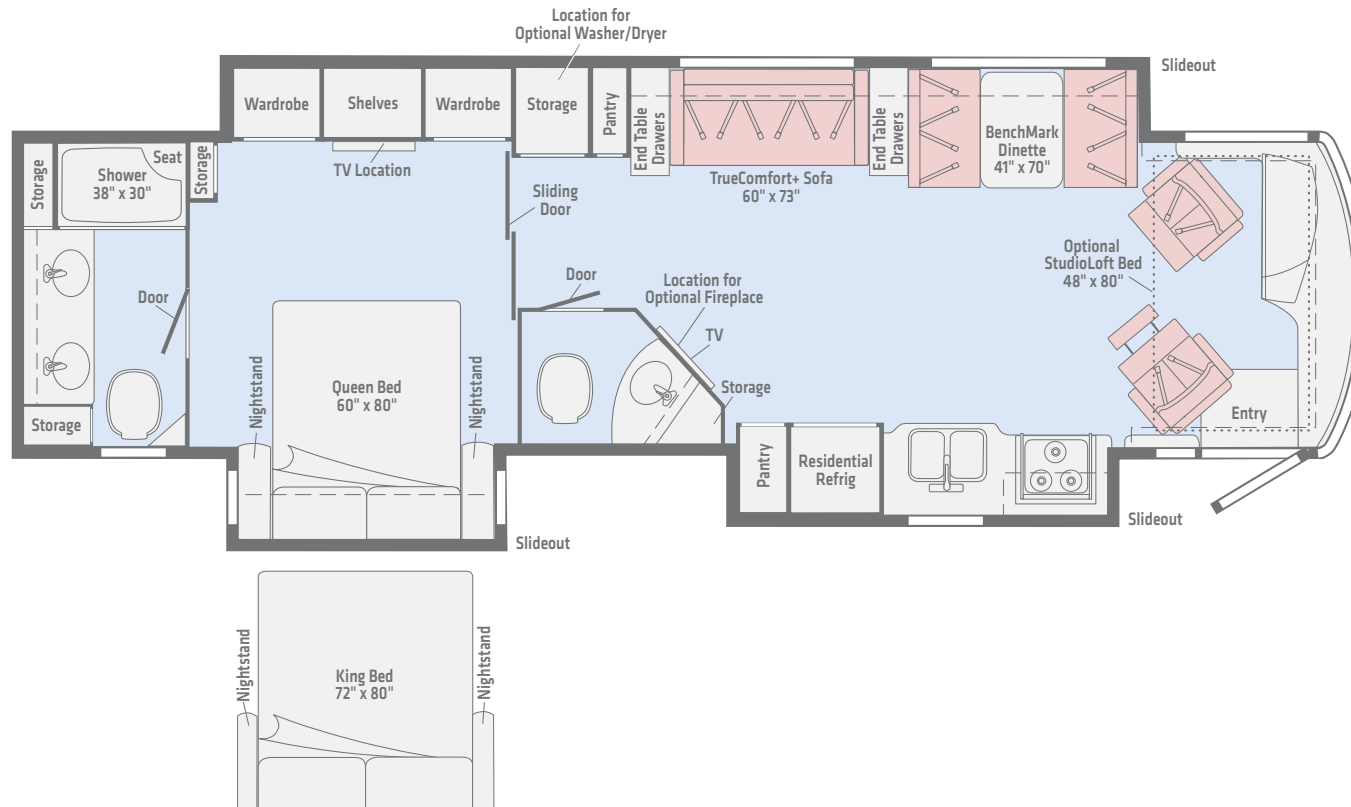
Vinyl Tile

**Length 38'1"**  
**Ext. Storage (cu. ft.) 222**  
**Seating 7**

*Dimensions shown are for sleeping and shower space only and may vary due to styling differences. Dashed lines denote overhead storage areas. Floorplans and specifications are also available online at [WinnebagoInd.com](http://WinnebagoInd.com).*

# 38F

Comfort comes in many forms in the 38F. Choose from a queen or king walkaround bed, enjoy a double sink in the master bathroom, and relax on the TrueComfort+ Sofa.



Primer



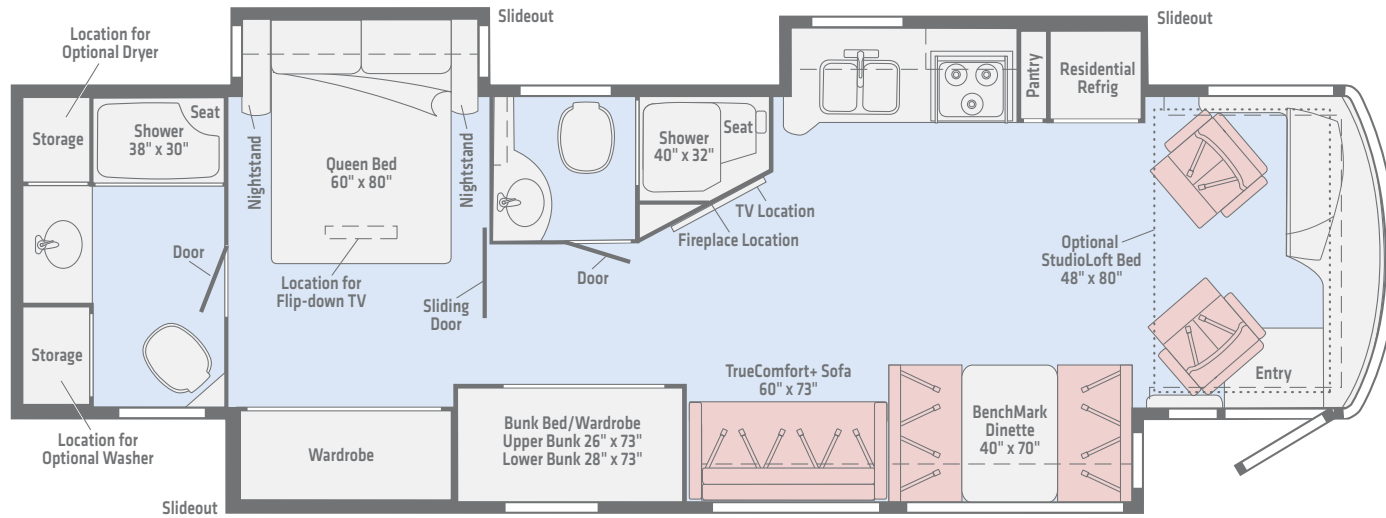
Vinyl Tile

**Length 40'**  
**Ext. Storage (cu. ft.) 228**  
**Seating 5**

*Dimensions shown are for sleeping and shower space only and may vary due to styling differences. Dashed lines denote overhead storage areas. Floorplans and specifications are also available online at [WinnebagoInd.com](http://WinnebagoInd.com).*

# 38W

Two full baths, the bunk bed/wardrobe system, a private master suite, and large living spaces make the 38W ideal for larger families or anyone who enjoys a little extra elbow room.



Primera



Vinyl Tile

**Length 40'**  
**Ext. Storage (cu. ft.) 228**  
**Seating 9**

*Dimensions shown are for sleeping and shower space only and may vary due to styling differences. Dashed lines denote overhead storage areas. Floorplans and specifications are also available online at [WinnebagoInd.com](http://WinnebagoInd.com).*

Weights & Measures	34T	36G	38F	38W
Length	35'9"	38'1"	40'	40'
Exterior Height <sup>1</sup>	11'11"	11'11"	11'11"	11'11"
Exterior Width <sup>2</sup>	8'5.5"	8'5.5"	8'5.5"	8'5.5"
Exterior Storage <sup>3</sup> (cu. ft.)	153	222	228	228
Awning Length	17'	11'9"	18'	20'
Interior Height	6'8"	6'8"	6'8"	6'8"
Interior Width	8'0.5"	8'0.5"	8'0.5"	8'0.5"
Freshwater Tank Capacity <sup>4</sup> (gal.)	84	84	100	100
Water Heater Capacity (gal.)	10	10	10	10
Holding Tank Capacity - Black/Gray <sup>4</sup> (gal.)	48/54	48/44	35/49(A)/51(B)	49/48(A)/51(B)
LP Capacity <sup>5</sup> (gal.)	23	23	23	23
Fuel Capacity (gal.)	90	90	90	90
GCWR <sup>6</sup> (lbs.)	30,000	33,000	33,000	33,000
GVWR (lbs.)	26,000	27,910	29,410	29,410
GAWR - Front (lbs.)	10,410	10,410	10,410	10,410
GAWR - Rear (lbs.)	17,500	17,500	19,000	19,000
Wheelbase	208"	236"	260"	260"
Seating Capacity	7	7	9	9

<sup>A</sup> Master Bathroom <sup>B</sup> Mid-Coach Bathroom

### Freightliner® XCS Chassis

26,000-lb. chassis, Allison® 6-speed automatic 2100 MH transmission (34T)

27,910-lb. chassis, Allison 6-speed automatic 2500 MH transmission (36G)

29,410-lb. chassis, Allison 6-speed automatic 2500 MH transmission (38F, 38W)

340-hp Cummins® ISB 6.7L

Information display center

NeWay® front air suspension

V-Ride rear air suspension

OptiView™ dash, digital LCD instrument panel cluster

160-amp. alternator

Air brakes w/ABS

Engine exhaust brake

Automatic hydraulic leveling jacks

7-pin trailer wiring

Rear cap engine intake screen

Trailer Hitch 10,000-lb. drawbar/500-lb. maximum vertical tongue weight

Stainless steel wheel liners (34T)

Stylized aluminum wheels (NA 34T)

Slide room lock system

### Cab Conveniences

Cab seats adjustable armrests, swivel, fixed lumbar support, and multi-adjustable recline

6-way power assist driver & passenger seat pedestal

3-point seat belts

Radio/Rearview Monitor System w/10.1" LCD color touch screen, handheld remote, rear color camera, Bluetooth®, Sirius-XM®-ready, USB input, HDMI/MHL connectivity

Cruise control

12-volt power supply for CB radio

Powered MCD blackout roller visor/shade (front windshield)

MCD blackout roller shade (driver and passenger windows)

Chassis/house battery radio power switch

Power mirrors w/defrost and sideview camera

Power steering

Powered stepwell cover (NA 34T)

TRW® tilt/telescopic steering column w/foot-actuated pedal

### OPTIONAL EQUIPMENT

+Lounger passenger cab seat w/footrest and flip-up workstation

SiriusXM® (includes 90-day trial subscription), receiver, remote, antenna

JBL premium audio tuned 360-watt amplifier w/5 speakers including subwoofer

### Interior

50" HDTV

TrueComfort+ Sofa Sleeper (NA 34T)

RestEasy® love seat (34T)

Satellite system ready

BenchMark® Dinette

Multi-plex wall switches

Digital TV amplified antenna system

Home theater sound bar system

Electric fireplace (38W)

Blu-ray™ disc player

LED ceiling lights

MCD blackout roller shades

Soft vinyl ceiling

OnePlace® systems center

Tinted, dual-glazed coach windows (NA 38F)

Dual pane, frameless windows

Powered ventilator fan (galley)

Washer and dryer prep

Assist bar

Vinyl flooring throughout

USB chargers (cab, lounge, bedroom)

Key/coat hooks by entrance door

### OPTIONAL EQUIPMENT

Washer and dryer (located in rear of master bath)

Electric fireplace (34T, 36G, 38F)

Powered StudioLoft™ w/privacy curtain, ladder, cargo net

Winegard Trav'ler automatic HDTV satellite system for DirecTV® and Dish® Network

MCD solar/blackout roller shades

## Galley

**Corian®** countertops and decorative backsplash

**2-door residential refrigerator/freezer, icemaker** w/flip travel latch

**Microwave/convection oven** w/range fan and touch control

**3-burner range top** w/storage below

**Glass bi-fold range cover**

**Bamboo sink covers**

**Pantry** (NA 36G)

## Bath

**Shower** 38"x30"

**Shower** 40"x32" (mid-coach) (38W)

**Laminate countertop**

**One-piece fiberglass shower surround** (NA 38W mid-coach shower)

**Flexible handheld showerhead**

**Textured glass shower door**

**Skylight**

**Porcelain toilet** w/foot pedal and sprayer (electric flush in rear bath, 38F, 38W)

**Bamboo sink cover** (38W)

**Powered roof vent(s)**

**Medicine cabinet**

**Linen cabinet** (NA 38W)

**Tissue holder**

**Towel bar(s)**

**Towel ring(s)**

## Bedroom

**28" HDTV** (38W)

**32" HDTV** (34T, 38F)

**40" HDTV** (36G)

**Queen bed** w/innerspring mattress and storage below

**Bunk beds** (38W)

**Bedsread and pillow shams**

**Headboard** (36G, 38F)

**Room divider curtain** (38W bunk beds)

**Wardrobe**

### OPTIONAL EQUIPMENT

**Queen InnoMax® Eurotop Freedom air mattress** (w/controllers)

**King InnoMax Eurotop Freedom air mattress** (w/controllers) (36G, 38F)

## Exterior

**Powered patio awning** w/LED lighting

**2nd powered patio awning** w/LED lighting (34T)

**Powered entrance awning** (NA 34T)

**Exterior compartment 110-volt duplex, TV antenna and 3-way A/V receptacles**

**KeyOne®** lock system

**LED porch light** w/Interior switch

**Lighted storage compartments**

**Automatic entrance steps**

**Assist handle**

**Lower front protective mask**

**PetPal leash tie down**

**Premium high-gloss sidewall skin**

**QuickPort service connection hatch**

### OPTIONAL EQUIPMENT

**Exterior Entertainment Center** w/32" HDTV

**Under carriage lighting** (38F)

## Heating & Cooling System

**2-13,500 BTU air conditioners** (1 A/C, 1 A/C w/heat pump) (34T)

**2-15,000 BTU air conditioners** (1 A/C, 1 A/C w/heat pump) (NA 34T)

**35,000 BTU ducted furnace** (34T)

**40,000 BTU ducted furnace** (36G)

**2-20,000 BTU ducted furnaces** (38F, 38W)

## Electrical System

**Service Center** cable TV input, 50-amp power cord, shoreline/generator automatic changeover switch, portable satellite hookup

**2,000-watt inverter/charger** w/remote panel with coach battery disconnect switch

**6,000-watt Cummins Onan®** generator

**Auxiliary start circuit**

**AC/DC electrical distribution system**

**4 deep-cycle Group 31 Marine/RV batteries**

**Battery disconnect system (coach and chassis)**

**PowerLine®** Energy Management System

**Automatic dual-battery charge control**

**Automatic generator start system**

## Plumbing System

**Service Center** pressurized city water hookup w/diverter fill, freshwater drain, drainage valves, exterior wash station w/pump switch, holding tank flushing system, 20' sewer hose

**On-demand water pump**

**10-gallon LP 110-volt electric water heater** w/electric ignition

**TrueLevel™** holding tank monitoring system

**Permanent-mount LP tank** w/gauge

**Heated holding tank compartment**

**Water system winterization package**

**Water system filtration package**

**Tankless water heater** w/recirculation pump (38F, 38W)

### OPTIONAL EQUIPMENT

**Tankless water heater** w/recirculation pump (34T, 36G)

## Safety

**LP, smoke, and carbon monoxide detectors**

**10 BC fire extinguisher**

**Ground fault interrupter**

**High-mount brake lamps**

**Daytime running lamps**

**Child seat tether anchor** (forward facing dinette seat)

## Warranty<sup>7</sup>

**36-month/100,000-mile basic limited warranty<sup>8</sup>**

**10-year limited parts-and-labor warranty on roof skin<sup>8</sup>**

### FOOTNOTES

- feature and is based on the curb weight of a typically equipped unit. The actual height of your vehicle may vary by several inches depending on chassis or equipment variations. Please check with your dealer for further information.
- Floorplans feature a wide-body design - over 96" In making your purchase decision, you should be aware that some states restrict access on some or all state roads to 96" in body width. Before making your purchase decision, you should confirm the road usage laws in the states of interest to you.
- The load capacity of your motorhome is designated by weight, not by volume, so you cannot necessarily use all available space when loading your motorhome.
- Capacities are based on measurements prior to tank installation. Slight capacity variations can result due to installation applications.
- Capacities shown are tank manufacturer's listed water capacity (W.C.). Actual filled LP capacity is 80% of listing due to overfilling prevention device on tank.
- Actual towing capacity is dependent on your particular loading and towing circumstances which includes the GVWR, GAWR, and GCWR as well as adequate trailer brakes. Please refer to the Operator's Manual of your vehicle for further towing information.
- See separate chassis warranty.
- See your dealer for complete warranty information.

NA Not Available

Not all items available in combination. See dealer for details.

Winnebago's® continuing program of product improvement makes specifications, equipment, model availability, and prices subject to change without notice. Published content reflects the most current product information at time of printing. Please consult your dealer for individual vehicle features and specifications.

